



# 12LFT-55

12V 57Ah



Q-Batteries 12LFT-55 is an AGM battery, which is designed for standby applications such as fire-detecting-systems, UPS or burglar-systems.

## Application:

burglar-systems, UPS-systems, fire-detecting-systems, telecommunication-systems, IT systems and more.

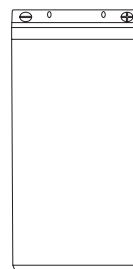
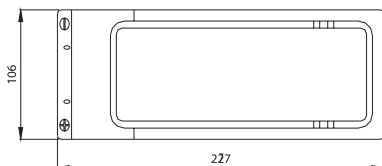
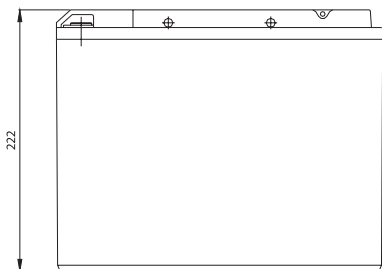


## Specification:

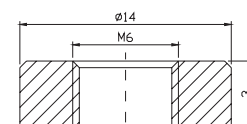
Voltage Per Unit	12 V		
Capacity	57 Ah (20h) cell voltage 1.8V / cell		
Cells Per Unit	6		
Weight	ca. 18,0 kg +/- 3%		
Max. Discharge Current	550 A (5 sec.)		
Internal Resistance	ca. 6m $\Omega$		
Float charging Voltage	13.5   VDC at $\varnothing$ 25°C		
Operating Temperature Range Normal	Discharge: - 20°C – 60°C	Charge: 0°C – 50°C	Storage: - 20°C – 60°C
Operating Temperature Range	25°C $\pm$ 5°C		
Self Discharge	Valve Regulated Lead Acid (VRLA) batteries can be stored for more than 6 months at 25°C. Self-discharge ratio less than 3% per month at 25°C. Please charge batteries before using.		
Terminal	F11 (M6 bolt)		
Technology	AGM, Absorbent glass mat technology		
Container Material	A.B.S. (UL94-HB)		

## Dimensions:

277 Length x 106 Width x 222 mm Height



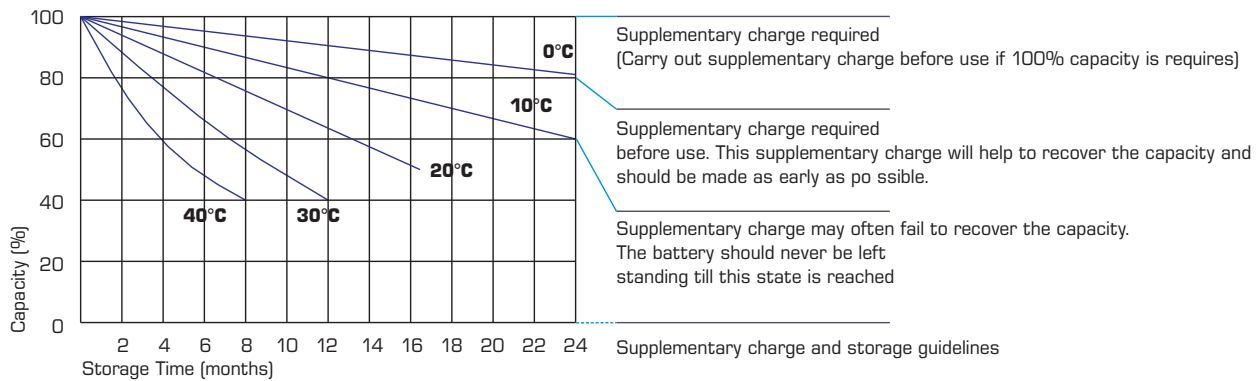
Terminal F11



## Constant current discharge characteristics: A (25°C)

F.V/Time	5 Min.	10 Min.	15 Min.	30 Min.	1 HR	2 HR	3 HR	4 HR	5 HR	8 HR	10 HR	20 HR
9.60 V	169.6	127.4	99.83	60.50	35.75	20.77	14.79	12.12	9.918	6.832	5.777	3.055
10.0 V	164.7	121.2	97.79	59.46	35.59	20.61	14.73	12.06	9.860	6.776	5.721	2.999
10.2 V	159.8	116.9	95.72	58.36	35.26	20.46	14.62	12.01	9.802	6.721	5.666	2.944
10.5 V	143.5	107.9	91.13	57.92	34.93	20.30	14.56	11.89	9.685	6.665	5.610	2.888
10.8 V	129.5	98.4	84.01	56.93	34.10	19.94	14.16	11.61	9.510	6.554	5.554	2.833
11.1 V	111.1	87.91	75.35	52.75	32.40	19.05	13.54	11.05	9.102	6.277	5.388	2.666

## Storage characteristic:



## Capacity Factors with different Temperature:

Battery Type		-20°C	-10°C	0°C	5°C	10°C	20°C	25°C	30°C	40°C	45°C
GEL Battery	6V & 12V	50%	70%	83%	85%	90%	98%	100%	102%	104%	105%
	2V	60%	75%	85%	88%	92%	99%	100%	103%	105%	106%
AGM Battery	6V & 12V	46%	66%	76%	83%	90%	98%	100%	103%	107%	109%
	2V	55%	70%	80%	85%	92%	99%	100%	104%	108%	110%

## Charging Method:

Charge the batteries at least once every six months, if they are stored at 25°C

Constant Voltage (V)	-0.2C x 2h + 2.4-2.45V/Cell x 24h, max. Current 0.3CA
Constant Current (A)	-0.2C x 2h + 0.1CA x 12h
Fast	-0.2C x 2h + 0.3CA x 4.0h